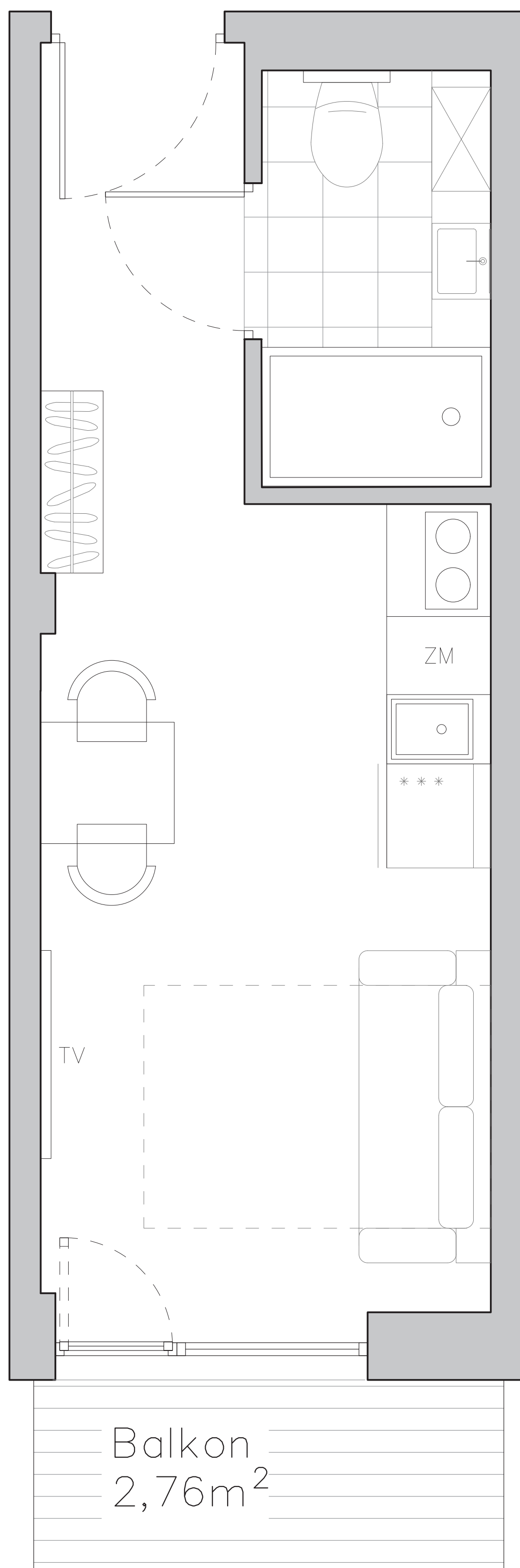
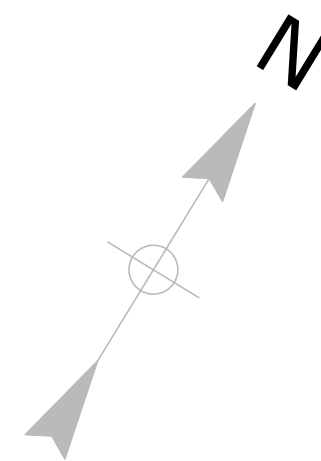


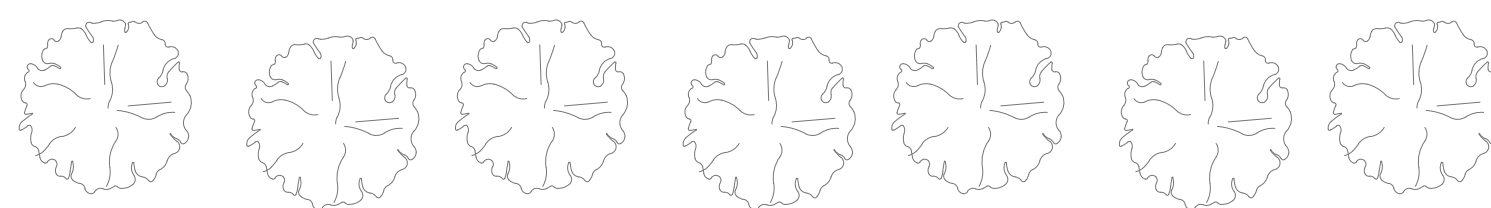
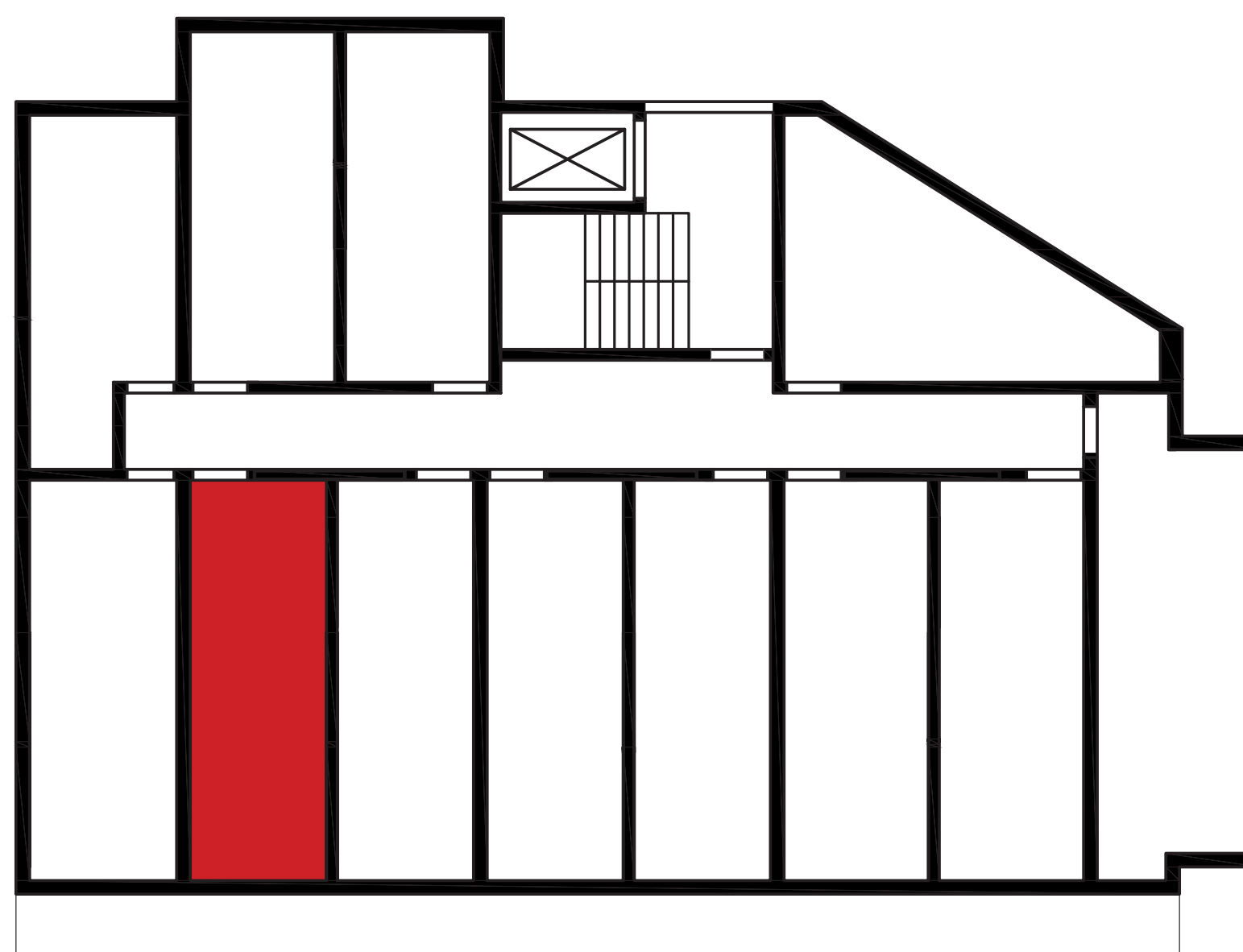
Lokal nr 32 - 3. piętro

Powierzchnia	18,05 m <sup>2</sup>
Pokój	14,92m <sup>2</sup>
Łazienka	3,13 m <sup>2</sup>



Balkon  
2,76m<sup>2</sup>

ul. Strzegomska



rzut piętra – usytuowanie lokalu na kondygnacji